

*Unforgettable*  
*moments*



PUTTERIDGE BURY  
WEDDINGS

## A WARM WELCOME TO PUTTERIDGE BURY

On behalf of the team at Putteridge Bury, we would like to congratulate you as you begin the exciting countdown to your special day. We are honoured that you are considering our venue to host such a significant occasion in your life.

Our team understands that no two weddings are the same. Whether you are planning an intimate gathering or a grand celebration, we are here to listen to your needs and work with you to bring your vision to life. Our focus is on creating a seamless, stress-free experience so you can immerse yourself in the joy of your day without worrying about anything.

With decades of experience, our team is dedicated to ensuring the highest level of professionalism. In fact, some of our team have been with us for more than 20 years, bringing expertise, skills and creativity that will make your wedding day extraordinary!

We are privileged to work in such a beautiful and historic setting, and we are committed to making your day as magical as the venue itself.

We look forward to working with you to create an unforgettable day filled with memories that will last for years to come.

*The Putteridge Bury Team*

*Unforgettable*





## A STEP BACK IN TIME: THE STORY OF PUTTERIDGE BURY

# *Timeless grandeur*

Putteridge Bury House is a neo-Elizabethan manor house built in 1911 in the style of Chequers, the Prime Minister's iconic country residence. The grounds of the estate were redesigned by the Edwardian architect Edwin Lutyens, whose visionary work shaped some of Britain's most distinguished country homes.

The planting was curated by Gertrude Jekyll, one of the most influential horticulturists of her time.

But Putteridge Bury's story extends far beyond the Edwardian era. Its history can be traced to the reign of Edward the Confessor, and it is even mentioned in the Domesday Book of 1086.

Over the centuries, it has been a place for entertainment and many celebrations. Among its most distinguished visitors were Queen Mary, King George V, and King Charles III during his time as the Prince of Wales, all of whom frequently visited Putteridge Bury. In December 1926, King George planted an oak tree on the lawn to the south of the house – just one of

the many historic moments that make this estate truly special. Today this magnificent house welcomes couples looking to create their own unforgettable memories.

With its timeless grandeur, historic past and stunning surroundings, Putteridge Bury House is the perfect backdrop for the most important day of your life.





## YOUR SPECIAL DAY

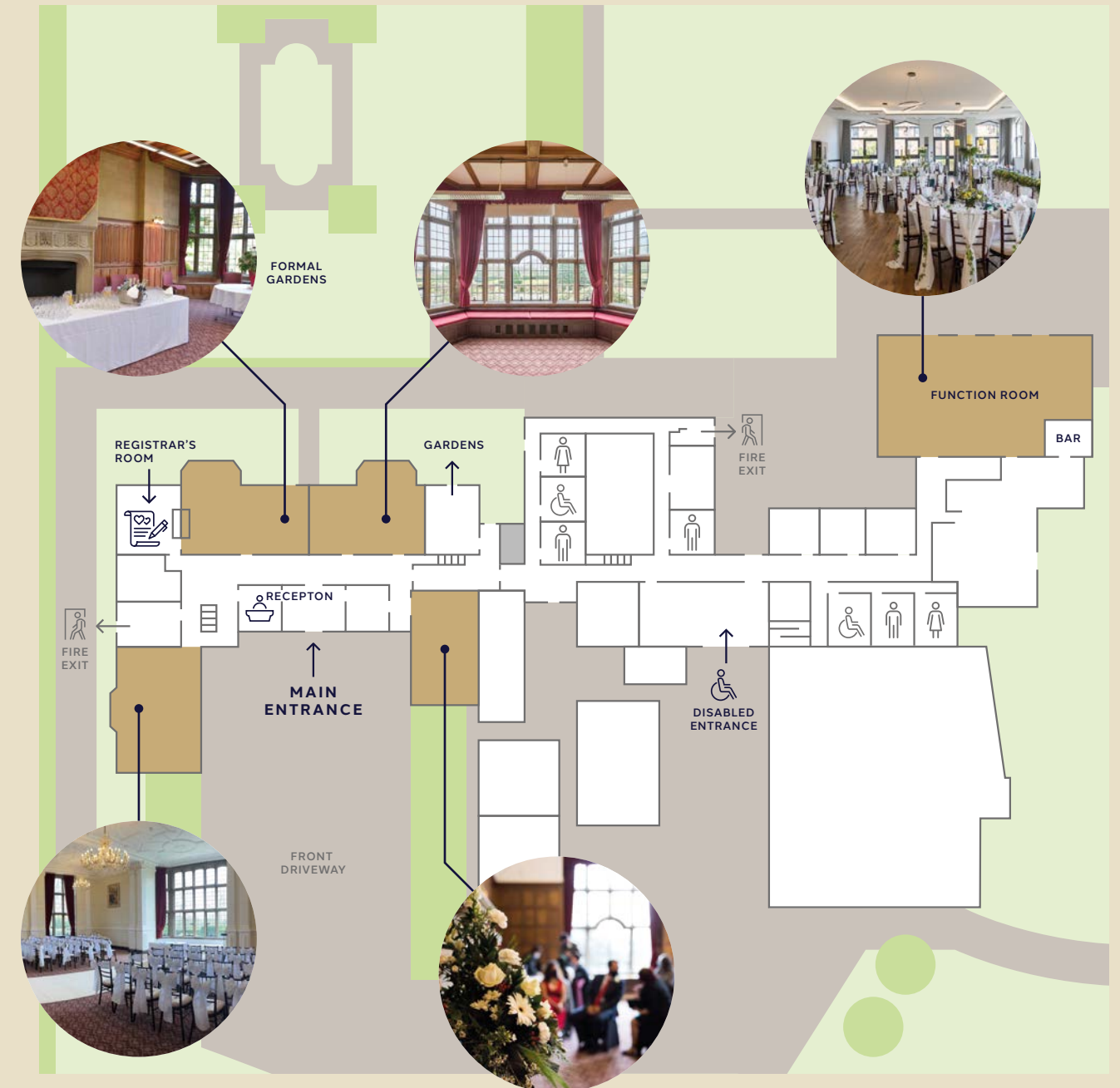
At Putteridge Bury, we believe your wedding day should be as unique and special as your love story. From your first enquiry to the final toast, our dedicated team takes time to listen, understand, and bring your vision to life – ensuring every detail is just as you imagined.

Renowned for our exceptional service and attention to detail, we provide everything you need for your celebration. From exquisite menus and fine wines to our dedicated, professional team, every element is designed to make your day truly special.

# Unique

Set within picturesque parkland on the Hertfordshire-Bedfordshire border, Putteridge Bury offers a picture-perfect backdrop for your wedding reception. We can accommodate up to 144 guests for your wedding breakfast and up to 200 guests for your evening celebrations, ensuring your day is as intimate or grand as you envision.

Let us help you create a wedding that is as timeless and elegant as Putteridge Bury itself.





## ICONIC LOCATIONS FOR YOUR PHOTOGRAPHY

- The reflecting pool
- House front and rear exterior
- The arches
- The Yew Tree Walkway
- The famous Egyptian stag
- The grand Edwardian fireplace
- The Edwardian oak panelling in the State Room
- The Gertrude Window Seat, which offers a beautiful view of the gardens designed by Gertrude Jekyll.



*picture perfect*



## YOUR CIVIL CEREMONY

### IMPORTANT LEGAL POINTS

We want your wedding to be as seamless and special as possible. Here are a few important details to help you plan your perfect day:

- You are free to marry at any Approved Marriage Venue, regardless of where you live.
- To secure your date, simply contact us to make a provisional booking, then get in touch with the Stevenage Registry Office at 0300 123 4045 to confirm their availability.
- Your ceremony can include personal vows, readings, and music; however, all content must be secular, with no religious references.
- The registry office will charge an additional fee for attending and conducting your ceremony.

If you have any questions, we are here to help.



### THE SETTING FOR YOUR CIVIL CEREMONY

Putteridge Bury is fully licensed to host indoor and outdoor civil ceremonies. Our beautiful, historic rooms allow you to walk down the aisle in the traditional manner, surrounded by elegance and charm.

To make your ceremony truly special, we are delighted to offer:

- Our licensed, oak-panelled State Room, providing a stunning backdrop for your vows.
- Fresh flowers in the colour scheme of your choice.
- Chiavari chairs (with or without bows), chair covers with sashes tailored to match your colour scheme.
- A beautifully dressed ceremony table, draped in white.
- A registrar's table, draped in white for a polished finish.



- Use of our picturesque gardens for up to 1½ hours after your ceremony, perfect for capturing unforgettable photographs.
- An experienced 'Responsible Person' dedicated to ensuring your day runs smoothly.

Detailed guides to our wedding packages and pricing are enclosed. A non-refundable deposit of £1,000 is required at the time of booking, with the remaining balance due at least one month before your wedding date.

*details matter*



## IMPORTANT INFORMATION FOR YOUR CELEBRATION

To ensure everything runs smoothly, please take note of the following:

### ADULT NON-ALCOHOLIC DRINKS PACKAGE

You are welcome to create a selection of non-alcoholic wine, beer, or soft drinks.

### CHILDREN'S PACKAGES

- Children under 2 years: Free of charge
- Children aged 2 to 10 years: 50% of the package price
- Children 10 years and older: Full price

Children's drinks include two glasses of orange juice at the drinks reception, plus cola or lemonade with the meal. Alternatives such as apple juice or squash are available on request.

### EVENING BUFFET

Our evening buffet is usually served between 8.30pm and 9pm. To ensure your guests are well catered for, you should order the buffet for at least 75% of the total number of guests (day and evening guests combined).

### FIREWORKS

Fireworks are permitted. However, we require the following:

- Insurance documents from the fireworks company.
- The company to notify London Luton Airport about the display.
- A site visit and meeting with us before the event.
- **Please note**, that Chinese lanterns are not permitted.

### ELECTRICAL APPLIANCES

Any electrical equipment brought onto the premises must be PAT-tested and labelled to ensure compatibility with our electrical system. This is especially important for DJs, bands, and any other live entertainment. They must also be fully insured and hold at least a £10 million public liability insurance.

### HIGHCHAIRS

We can provide up to two highchairs free of charge for your little guests.



If you have any questions or would like to visit Putteridge Bury, contact a member of our team today:



**01582 489069**



**conference.centre@putteridgebury.co.uk**



**www.putteridgebury.co.uk**

### With special thanks to:

- Martin Bou Mansour Wedding Photography
- KH Wedding Photography
- Sarah Legg Photography
- Alice Morgan Photography
- Lorna Newman Wedding Photography
- Leigh Spary Photography
- Stuart Bendig Photography







# with compliments

## TESTIMONIALS



Our wedding was the most relaxing, picture perfect day! The team were accommodating to everything we requested. Everyone had an amazing day. We worried about absolutely nothing. My vision of my wedding come to life and they all made it happen. Thank you so so so much. Everything you need without having to change location for wedding breakfast and evening reception. Amazing. Thank you so much again. You're all fantastic!

**MELISSA & NATHAN**



The team at Putteridge Bury went above and beyond every expectation from start to finish. The venue was just perfect, the attention to detail was outstanding, the food was exceptional, catering for all my guest's dietary requirements etc. The manager made me feel really special on the day, checking I was okay. It was just perfect and our guests all commented on how beautiful everything was.

**PENNY**



The manager and team were exceptional from start to finish. The venue speaks for itself – the canapés, food, drinks, service and attention to detail was beyond belief. We had the best day ever!

**HEIDI & DOM**

## HOW TO FIND US

**Hitchin Road, Luton, Bedfordshire LU2 8LE**

Putteridge Bury is a short taxi ride from Luton train station and a 15–20-minute taxi drive from Hitchin.



For further information or to make a booking please contact our friendly team:



**01582 489069**



**conference.centre@putteridgebury.co.uk**



**www.putteridgebury.co.uk**



**PUTTERIDGE BURY**





# PUTTERIDGE BURY



@PutteridgeBury



[www.putteridgebury.co.uk](http://www.putteridgebury.co.uk)



University of  
Bedfordshire

Putteridge Bury is part of the  
University of Bedfordshire estate