



HYLANDS
ESTATE

LUXURY WEDDING
VENUE IN ESSEX



The Perfect Setting

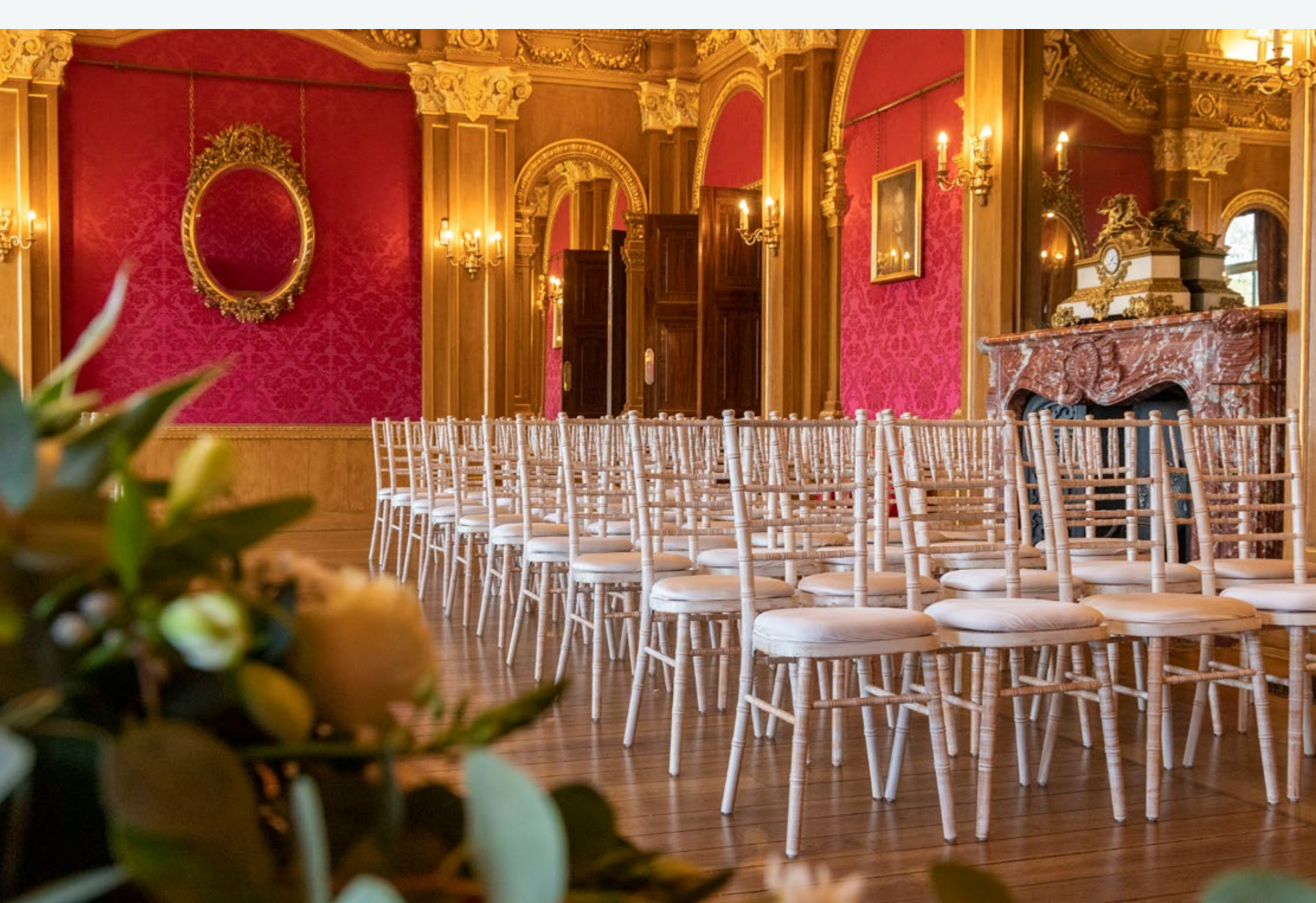
Imagine choosing a venue for your wedding day with a team that knows exactly how to make the magic happen. From your very first enquiry to the special day itself, we will be with you every step of the way to turn your dream into a reality.

Our award-winning Grade II* listed mansion, Hylands House, is set in 574 acres of landscaped parkland. Here, you'll find our beautifully restored ceremony and reception rooms, plus the contemporary Grand Pavilion and outdoor wedding ceremony garden just a few steps away.

Our Pleasure Gardens provide plenty of photo opportunities to capture your day. Stunning parkland and never-ending views of the Essex skyline are all around you. All this, and only 30 minutes from London.

Our experienced, wedding expert team are here to help with planning your day at Hylands Estate. Enquire with us now.





Luxury & Style

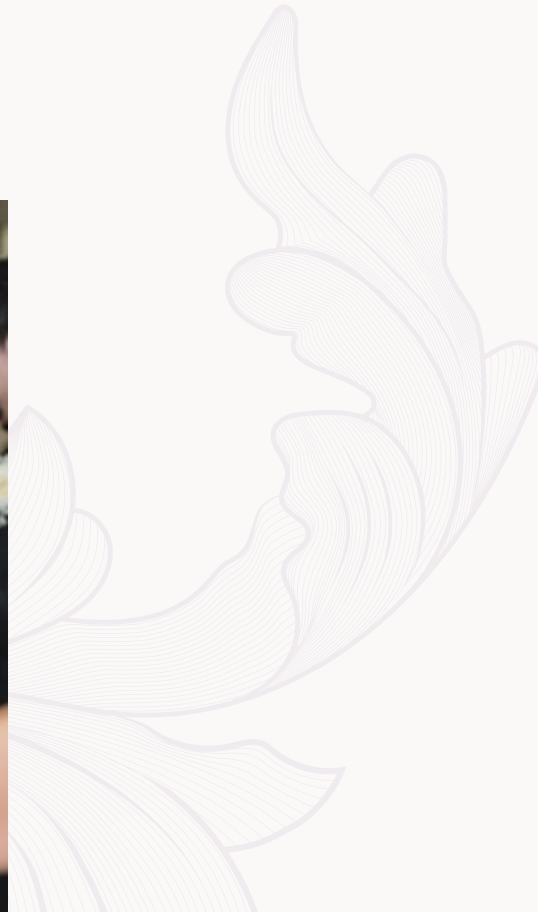
Hylands House is the vision of luxury and opulence. The Banqueting Room provides a stunning backdrop to your wedding ceremony, with its 24 carat gold leaf decorations and silk lined walls. The Drawing Room is a remarkable space with its gilded ceiling and stunning marble fireplace. Our beautifully refurbished wedding suites create a unique link to the estate's gardens with a horticultural theme. The Grand Pavilion offers a stylish celebration space with sparkling chandeliers and ivory drapes.



Spacious Elegance

The beauty of the venue is in its elegant surroundings and flexibility. Host your ceremony for up to 100 guests in our breath-taking Banqueting Room or the elegant Drawing Room. The light and airy open space of the Grand Pavilion can welcome up to 300 guests and is perfect for you to decorate in your own unique way.







Beautiful Surroundings

The grounds and formal gardens within Hylands Estate offer the dream setting for your wedding photos. Enjoy exclusive use of the East Terrace Garden for your confetti photo following your ceremony. Take a stroll into the Pleasure Gardens filled with seasonal flowers, including our famous wisteria, roses and lily pond.

Our new outdoor wedding ceremony garden gives couples the chance to say their vows under the graceful tree canopy of the estate's woodland. The area includes a bespoke oak structure for couples and wooden seating in keeping with the woodland theme.



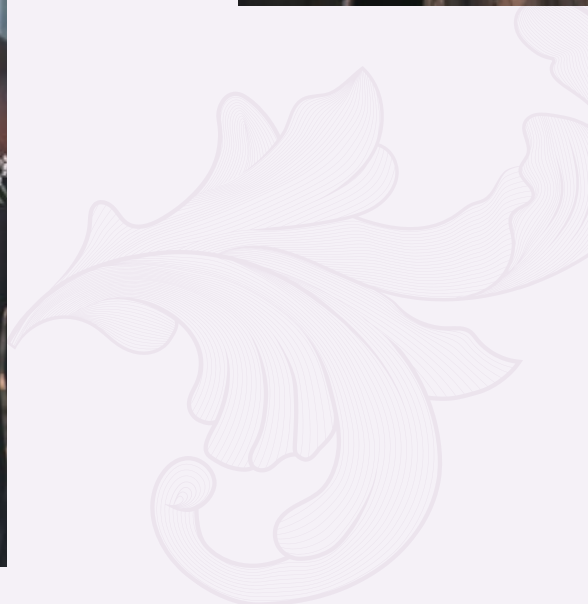


“Thank you so much for being an amazing support throughout the wedding journey. You have been a dream to work with and we are extremely grateful!”

I couldn’t have asked for a better Duty Manager on the day. Nothing was too big or too small and she ensured everything was in check.

To all of you at Hylands, we are grateful for everything”

H&Y, 2023



Say your vows in a spectacular setting

Making your commitment to one another in front of family and friends is such a special moment, that you deserve the elegant surroundings to match.





The Banqueting Room

The beautifully restored neo-baroque Banqueting Room provides the perfect setting for your wedding ceremony for up to 100 guests. With 24 carat gold leaf and scroll decorations, silk lined walls and hand painted wall motifs, this opulent space provides a stunning backdrop for your wedding ceremony or reception space.

Its elegant floor to ceiling windows let the light stream in and give a stunning view of the back lawn, and the sweeping parkland beyond.

ROOM DIMENSIONS

12m x 7m

ROOM CAPACITY

Ceremony – maximum 100 guests,
or 80 guests if dining

ROOM HIGHLIGHTS

Coffered, gilded and hand painted ceiling
French marble fireplace, as well as stunning
views of lawn, parkland & Serpentine Lake

The Drawing Room

The Drawing Room is a remarkable space for up to 100 guests. It has a fabulously ornate and gilded ceiling, complemented by the beautiful hand-painted wall motifs and a stunning marble fireplace.

With a dual aspect overlooking the beautiful parkland and views opening out onto the East Terrace, the Drawing Room provides a wonderful setting for your wedding ceremony.

After your ceremony, the East Terrace provides the perfect visual opportunity for both romantic and group photographs as well as romantic confetti photographs.

ROOM DIMENSIONS

11m x 6.5m

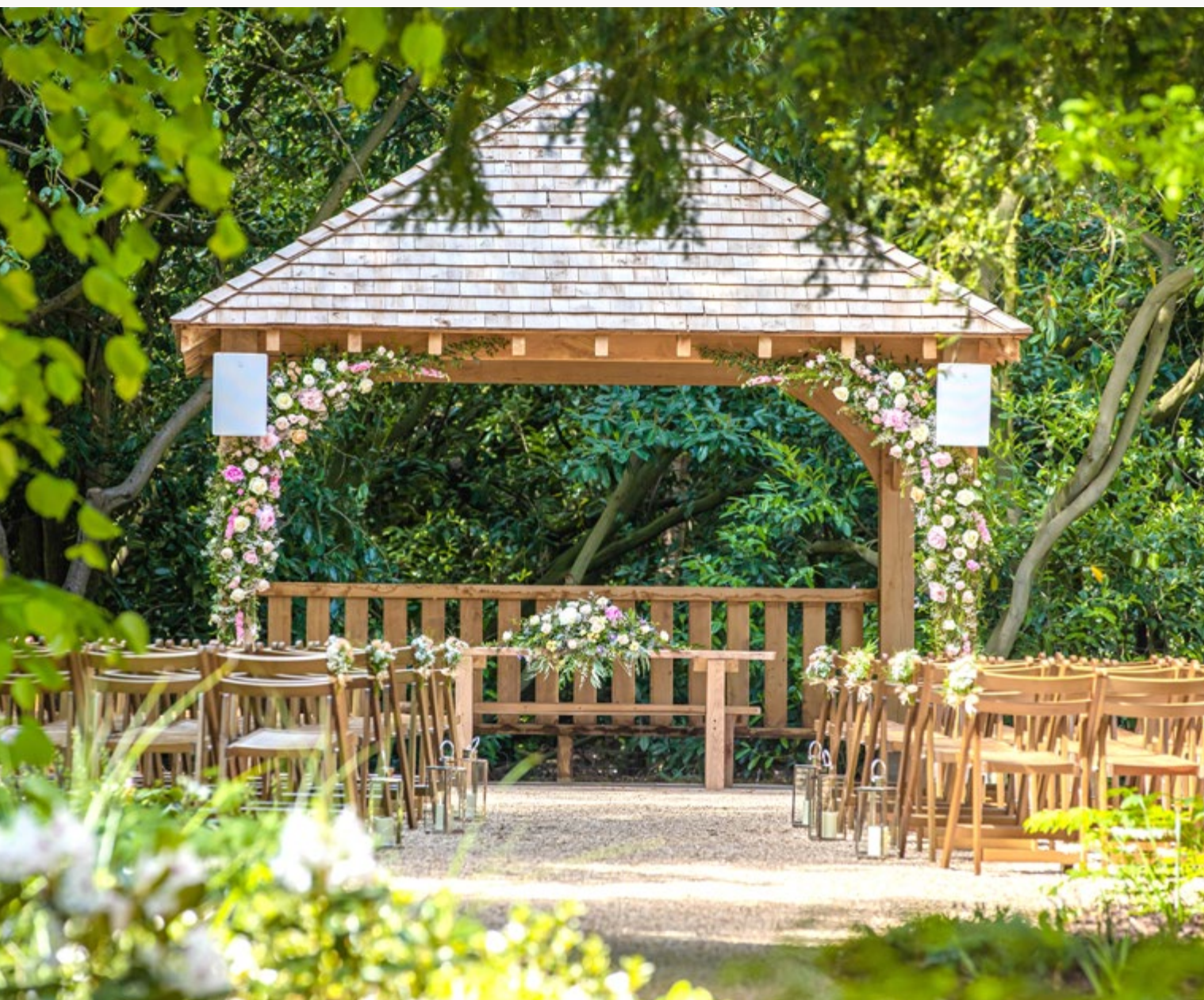
ROOM CAPACITY

Ceremony – maximum 100 guests

ROOM HIGHLIGHTS

Ornate and gilded ceiling, beautiful hand-painted walls, lavish white marble fireplace, all overlooking beautiful parkland





Outdoor Ceremony Garden

Our new outdoor ceremony garden gives couples the chance to say their vows under the graceful tree canopy of the estate's woodland. The area includes a bespoke oak structure for couples and wooden seating in keeping with the woodland theme.

The area has been professionally landscaped by the Hylands Estate's parks team, with rhododendrons, azaleas and seasonal bulbs, with the trees providing a beautiful natural canopy.

SPACE CAPACITY

Ceremony – maximum 100 guests

SPACE HIGHLIGHTS

Bespoke oak structure and purpose-built seating, discreet outdoor sound system, close to Hylands House and Grand Pavilion whilst staying in the natural beauty of the park and gardens

The Grand Pavilion

Complete with sparkling chandeliers and ivory drapes, the Grand Pavilion offers a stylish celebration space for up to 300 guests. It is perfect for you to decorate in your own unique way. The floor-to-ceiling windows allow natural light to wash over the room whilst guests enjoy private views of the courtyard.

The Grand Pavilion is a completely flexible space – enjoy your ceremony and reception all in one room! There's time to relax with drinks in Hylands House or explore the glorious outdoor surroundings whilst we turn around the room for you.

ROOM DIMENSIONS

25m x 18m

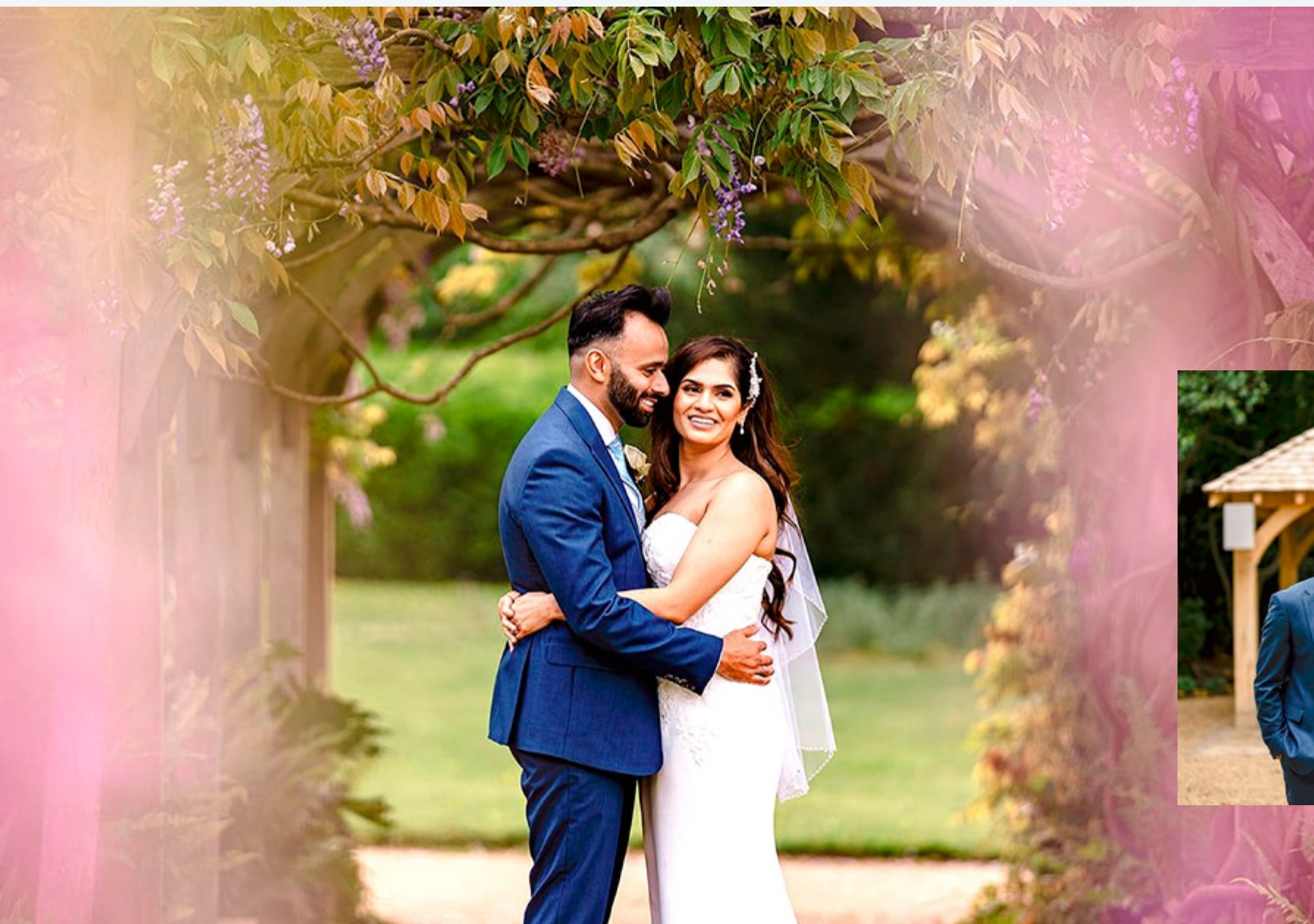
ROOM CAPACITY

Ceremony/reception – maximum 300 guests

ROOM HIGHLIGHTS

Large, flexible modern space permanent bar for your selected drinks supplier to use, an exclusive kitchen with an outdoor cooking area, uplighters, furniture and a PA system for speeches and background music





“Throughout the planning process we felt completely well informed and everything was so well organised. Even having a face to face final meeting to walk through the whole day was so reassuring.

We felt so well taken care of and we honestly didn’t feel any stress throughout the day... we were so happy that we’d picked the perfect venue for our civil wedding!”

H&M, 2022



Getting ready in superior surroundings

We have transformed our wedding suite into luxurious spaces with tailor-made touches. These rooms have been inspired by the work of landscape architect Sir Humphry Repton who was hired to redesign the house and grounds in the 19th century. Liz Knight, a leading interior designer, and a resident artist at Hylands Estate has created a stunning backdrop for wedding parties getting ready for their special day.

Wisteria Room

A breath-taking suite with huge antique mirrors to give brides a full view of their dress. There is hanging space to accommodate long wedding veils, dress trains and accessories. With fantastic views of the back lawn, the Wisteria Room is decorated with beautiful hand-painted images of the cascading purple flowers of this climbing plant – a key feature of the estate's Pleasure Gardens.





Rose Room

This gorgeous adjacent room takes its lead from the classic rose garden close to Hylands House. It has a salon-worthy beauty area and plenty of seating with ornate velvet furnishings. It is the perfect suite for bridesmaids to get ready, with even more space than a high-end hotel!



Repton Room

Ideal for the use by the groom and his party, this spacious new room overlooking the sweeping back lawn is named after Repton himself. The star of this room is its stunning William Morris feature wall. It has comfortable sofas and bespoke wardrobes with plenty of hanging space. Like with all rooms, it has a safe, fridges and integrated tea and coffee making facilities.





Cultural & Multicultural Weddings

The impressive flexibility of our venue and the extensive knowledge within our expert team means no two days are made the same. Hylands Estate can suit your needs and is equipped to hold a variety of ceremony styles and reception sizes.

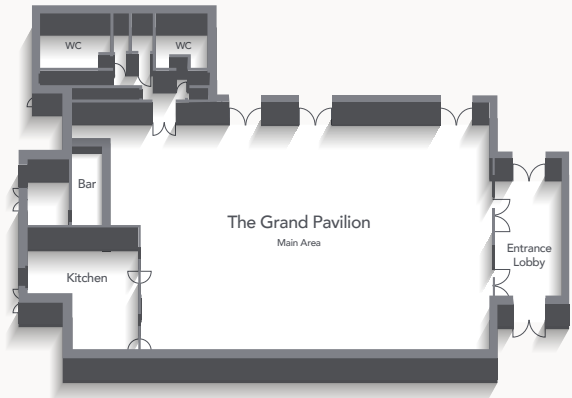
Visit our website for just some of the cultural and multi-cultural weddings we hold here at Hylands Estate.





Room Plans

Grand Pavilion Plan



GRAND PAVILION

25 x 18 metres

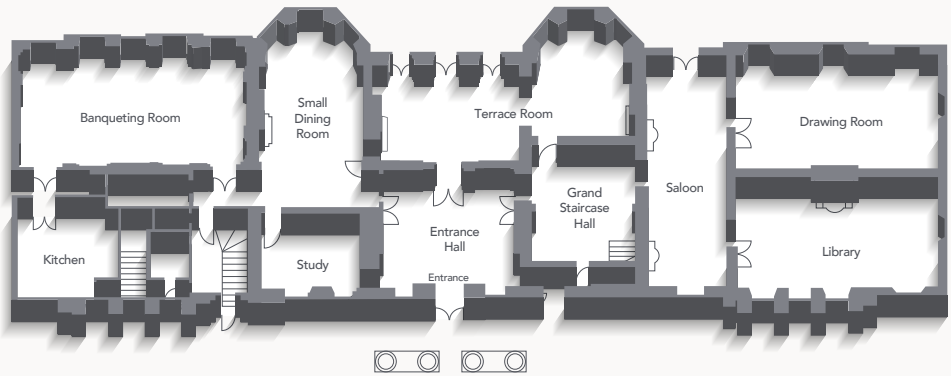
LOBBY

10 x 5 metres

KITCHEN

60 metres²

Ground Floor Plan



BANQUETING ROOM

12 x 7 metres

DRAWING ROOM

11.5 x 6.5 metres

THE LIBRARY

11.5 x 6.5 metres

THE SMALL DINING ROOM

7 x 5.5 metres

THE TERRACE ROOM

13.7 x 5.8 metres

THE STUDY

5 x 4.3 metres

THE ENTRANCE HALL

8 x 7.3 metres

The Team

From your initial enquiry, a member of the Events and Weddings team will be at your disposal right up until your wedding day. With a range of wedding styles under our belts, our team will be on hand to welcome your guests, monitor the venue and assist with all the coordination on the day.

Join us on social media

@HylandsEstateWeddings



Events and Weddings Team

Hylands House
Hylands Estate
London Road
Chelmsford
Essex
CM2 8WQ

T 01245 605500

E hylands@chelmsford.gov.uk

W hylandsestateweddings.co.uk





Tom



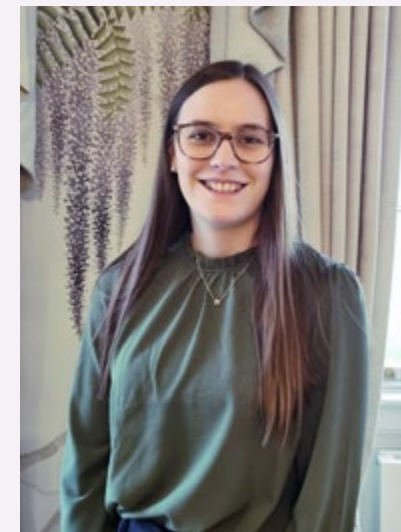
Amy



Tracey



Sian



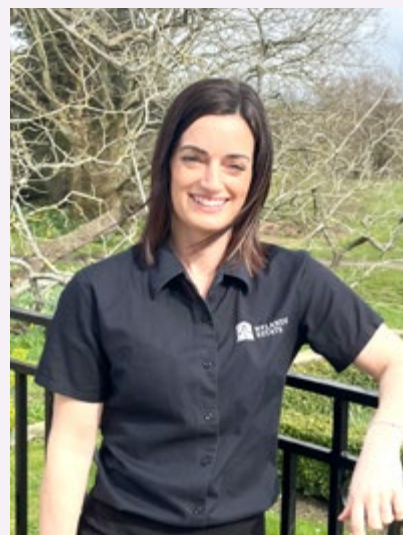
Charlotte



Courtney



Grace



Jemma



Megan

Speak to the team

To arrange a viewing or to find out more about our weddings & upcoming open days please contact the events and weddings team.

T 01245 605500

E hylands@chelmsford.gov.uk



Find Us

Driving

From Colchester 40mins	From Stratford 40mins
From Stansted 40mins	From Finchley 60mins
From Maidstone 50mins	From Central London 90mins

Train to Chelmsford

From Colchester 25mins	From Liverpool Street 35mins
From Southend Victoria 60mins	From Kings Cross 50mins
From Maidstone 120mins	From Paddington 60mins

Chelmsford Rail Station is in the city centre and a short taxi ride away from Hylands Estate.



HYLANDSESTATEWEDDINGS.CO.UK

Hylands House, Hylands Estate, London Road,
Chelmsford, Essex. CM2 8WQ

E hylands@chelmsford.gov.uk T 01245 605500

All photographer credits can be found on our new website.