



KIMBERLEY HALL


NORFOLK

THE VENUE FOR ALL SEASONS

Welcome to Kimberley

For over 300 years Kimberley has played host to a multitude of gatherings of all kinds. As the current custodians of this magnificent family home, it is an honour to share these historic spaces and spectacular landscape with you and your guests.

With best wishes

The image shows two handwritten signatures in black ink. The signature on the left is 'Robbie Buxton' and the signature on the right is 'Iona Buxton'. They are positioned above their respective printed names.

Robbie Buxton

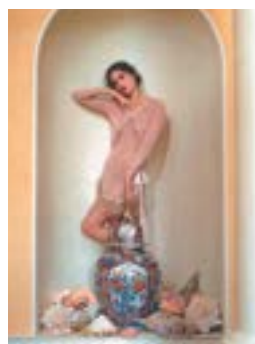
Iona Buxton



About Kimberley

Built in 1712 during the reign of Queen Anne, Kimberley sits at the centre of a 700-acre park laid out in 1778 by the nation's most famous landscape designer 'Capability' Brown. The house boasts spectacular views past grazing cattle and Norfolk's greatest concentration of ancient oaks, to a large lake at the bottom of the River Tiffey valley.

Centrally located in Norfolk, 9 miles west of Norwich and close to arterial road, rail and air links (plus a private airstrip), Kimberley is ideally positioned for all kinds of events should you wish to host a wedding, customer care day, meeting, film or photo shoot, private party, product launch or large-scale open-air event. These are conducted on an exclusive basis with the privacy you would expect of a family home.





Say 'I Do' *At Kimberley*

Kimberley provides a romantic and entirely private setting all year round for your special day with a multitude of beautiful spaces both inside and out that take your guests on a theatrical journey whatever the weather. The hall is also unique in having a professional three-manual, church grade electronic organ should the bride, groom and their wedding party wish to make a sensational entrance and departure. The majestic entrance hall and central staircase lead into the Music Room that is licensed for civil ceremonies. This light and elegant space with its large arched window looking towards the yew trees and exquisite 18th-century plasterwork offers the grandeur and sincerity befitting the commitments made at a marriage ceremony.

The Music Room leads into the terraced garden (that can also be used for an external ceremony) past the fabulous spiral staircase that serves as a private route to your accommodation on two levels. For dining and entertainment the vernacular-chic West Wing provides a stylish and relaxed environment with its bespoke marble bar, computer-controlled LED lighting and laser system, giant mirror ball and sumptuous lounge upstairs with its balcony overlooking the dance floor. Round tables offer flexible seating for 130+ for your wedding breakfast or up to 250 for an evening reception (with additional capacity upstairs). There is also unlimited space in the garden for a marquee amongst the yew trees with beautiful views of the lake.





Corporate Hospitality

Events, Parties, Film & Photo Shoots

For over 30 years the team at Kimberley has hosted a multitude of differing events so has a considerable depth of knowledge and experience in organising and assisting you in running whatever occasion you wish to host here. The house and grounds offer a wide diversity of spaces from the classical to the vernacular which can be used as break-out areas to cover any type of large-scale or intimate event. Whilst the house has a maximum capacity, the grounds can host very substantial open-air events and for over three decades was home to a boutique music and creative arts festival.

No two events are the same so we tailor spaces and costs accordingly. We are also able to offer substantial ancillary areas for storage and other purposes and have a 3x3-metre projector screen set up in the West Wing for conferences, management training, team-building days, exhibitions and product launches.

Whether you wish to host a private dinner in front of the beautiful log fire, a Christmas, birthday or anniversary party beneath the giant rotating mirror ball, or come together for a family christening, wake or summer garden party, we can cater and style for all kinds of special events throughout the year and at relatively short notice.





Food & Drink

We believe it is important for you to have flexibility so we have a list of carefully selected caterers who offer beautiful menus and professional staff for your event be this a formal sit-down, garden party, or more informal dining occasion with street food options or afternoon tea, bowl food, hog roasts or sharing feasts.

Our stunning marble-topped bar, back-lit with colour changing LED lighting, can deliver more or less anything you want. Additionally our bar manager will gladly put together a customised cocktail and drinks plan to suit your tastes. Our extensive wine list has been carefully put together to offer something for all tastes and budgets.

We also offer a flexible package to include canapes, three-course wedding breakfast, evening food, arrival drinks, wine with your meal and a toast drink, allowing you to spend more time organizing the finer details of your day.





Accommodation

The Hall

Sleeps 16-18

The Hall offers sumptuous rooms for you and your guests on two interconnecting floors. These in turn lead directly down to the event spaces on the ground floor and garden via the beautiful spiral stair that is your own private access.

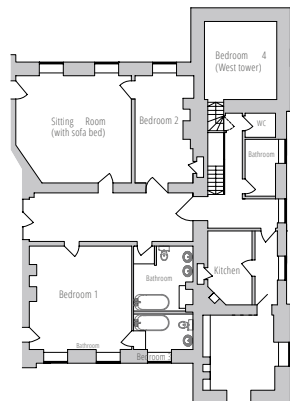
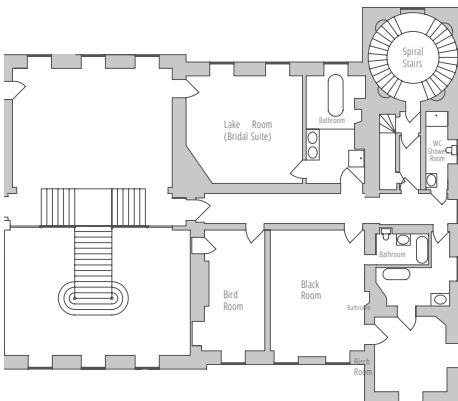
The four rooms on the first floor consist of a lavish four-poster bridal suite with a magnificent Drummonds en-suite bathroom that has a unique double shower and raised bath allowing you to overlook the lake; two further double en-suite bedrooms (one a four-poster), and a twin room with its private walk-in marble shower room.

We have a luxury apartment on the second floor offering a further four double bedrooms (two of which can be formed into twin rooms), three bathrooms (one en-suite) and a separate WC. These are designed to meet the highest aesthetic tastes. The south-facing sitting room with its stunning views of the Capability Brown landscape and lake includes a double sofa-bed. There is a small modern kitchen for your convenience and a spacious dining area in the central hallway that can seat 18 guests comfortably. A discount is offered when both floors are taken for two nights or more.



First Floor

Second Floor





The Garden Cottage

Sleeps 12 (6 Double Bedrooms)

This new addition to the portfolio of event and wedding accommodation on the Kimberley Hall Estate is situated only 360 metres away from the hall and is now available for your special function. It comprises 6 double bedrooms (4 super-king sized beds can be made into twins), 3 stylish bathrooms (one ensuite to the master bedroom and adjacent bedroom) and a separate downstairs WC. Its large open-plan spaces on the ground floor are perfectly suited for modern living and for those wishing to make a weekend of their time at Kimberley. The spacious yellow sitting room affords direct access to the private garden with its swing seat and a light and elegant conservatory looks on to its own 1.5 acre mini ancient oak park. The house is extremely comfortable and practical with its larder, utility room and spacious boot room. It has all the amenities plus business-grade super-fast fibre broadband.

Please note that we give priority to event and wedding guests if booked more than 6 months in advance of the event date; thereafter they are on general release to the open market as holiday lets. Confirmed reservations must be paid for not later than 6 months in advance of your function.





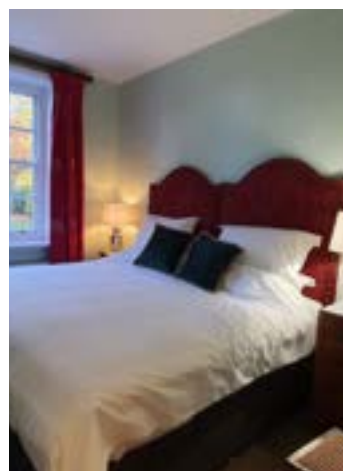
The East Wing Apartment

Sleeps 6 (3 Double Bedrooms)

Number One Kimberley Hall is a light and spacious apartment that extends across the entire ground floor width of the north elevation and offers close-by and convenient accommodation for your event or wedding at Kimberley. It is wheelchair accessible and has its own private entrance and parking area. It comprises 3 super-king double bedrooms/zip & link twins, one with an en-suite shower room that is wheelchair accessible. The larger second bathroom has a large cast-iron bath, separate shower and marble-topped twin basins. There is light and airy open-plan fully equipped modern kitchen with a dining room table that seats 6-8, a large north and west-facing drawing room bathed in natural light from four large windows.

Please note that we give priority to event and wedding guests if booked more than 6 months in advance of the event date; thereafter they are on general release to the open market as holiday lets. Confirmed reservations must be paid for not later than 6 months in advance of your function.

When booked for more than one-night, guests have access to a private garden with a summer house, BBQ and historic round pond with fountain.



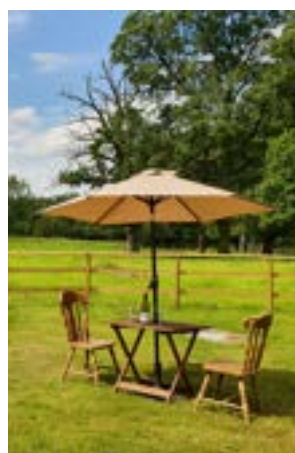
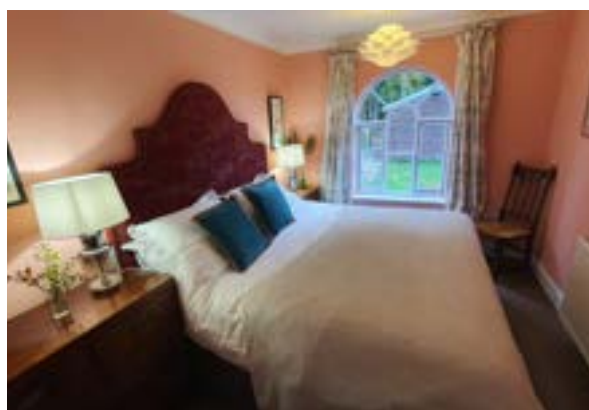
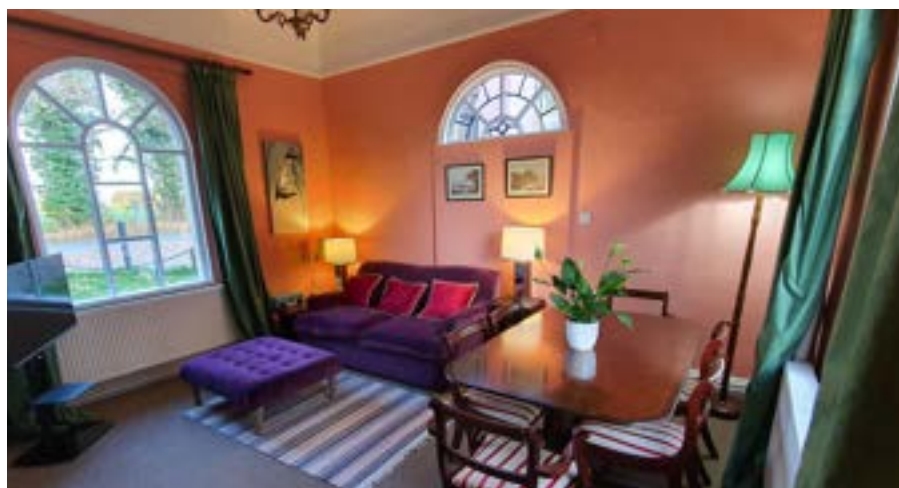


The Gate House

Sleeps 2-4

This romantic pink gate house is a charming addition to Kimberley Hall's event and wedding accommodation. It has its own private garden which overlooks Capability Brown parkland with magnificent trees, frequented by grazing cattle and deer. It comprises one double bedroom with a sumptuous super-king bed with a beautiful custom-made headboard, a pretty bathroom with arched window looking towards the landscape, a fully equipped kitchen and a 'Tardis' like sitting room with a high domed ceiling and Loaf sofa bed (the equivalent of a standard double bed), period dining table seating 6, large TV and a smart LED log effect burner with sound effects! The garden faces west and is perfect for sundown cocktails with its outdoor table, chairs and umbrella. The property has a small herb garden and fast fibre broadband.

Please note that we give priority to weddings and event guests if booked more than 6 months in advance of the event date; thereafter they are on general release to the open market as holiday lets. Confirmed reservations must be paid for not later than 6 months in advance of your function.



Schedule of charges

WEDDING PACKAGES (prices based on 80 guests*)

	Weekend <i>(Fri, Sat, Sun)</i>	Mid-Week <i>(Tues, Wed, Thurs)</i>
High Season <i>April-August and the week before Christmas</i>	£17,000	£14,000
Mid Season <i>September, October and December</i>	£15,500	£13,500
Low Season <i>Jan-March and November</i>	£14,000	£13,000

**Additional guests £115 per head for both weekend and midweek*

***Children £60, Extra Evening guests £15.*

Packages include:

Exclusive hire of Kimberley Hall including historic Music Room for your ceremony, the extensive garden with beautiful views of the lake and the West Wing for your wedding breakfast and evening party.

Flexible set-up window the day before the wedding

All tables and chairs with claret velvet chair-pads (for up to 130)

2 glasses of Prosecco or soft alternative per guest for your reception drinks

Canapes, 3-course wedding breakfast and evening food (including kitchen equipment, plain white linen, standard cutlery and crockery)

2 glasses of wine per guest with your wedding breakfast

1 glass of Prosecco for your toast

Fully-stocked bar

Event Manager and all bar and catering staff

Disco from 8pm-Midnight

Bespoke weddings

	Venue Only
High Season <i>April-August and the week before Christmas</i>	£4,950
Mid Season <i>September, October and December</i>	£3,950
Low Season <i>Jan-March and November</i>	£3,000

** POA for Christmas and New Year period*

*** A supplement of £500 per 100 guests will be charged for numbers over 130.*

Bespoke weddings include:

Exclusive use of Kimberley Hall including the historic Music Room for your ceremony, the extensive garden with incredible views of the lake and entire West Wing for your wedding breakfast and party.

We can seat up to 130 guests in the West Wing (with potential for 80 additional guests to be seated upstairs) or you may hire a marquee for the grounds. Also included is event management, a fully-staffed bar and all your indoor tables and chairs with claret velvet seat pads (for up to 130).

A flexible set-up window the previous day.

Food:

Please choose from our nominated caterers who have been carefully vetted to provide you and your guests with the very best experience. Their prices start from £80 per head which includes all hire of table linen, glassware, crockery and cutlery and kitchen equipment. If you decide to use your own caterer this will incur a £750 supplement and they will need to be approved by us before using our facilities. Alternatively, street food options are available starting from £34 per head.

Nominated Caterers

Mackenzie-David Events

Rebecca Mackenzie

M: 07460 400276

T: 01986 893991

Email: rebecca@mackenzie-david.co.uk

Website: www.mackenzie-david.co.uk

Garden Kitchen Catering

Alex Firman

T: 01603 784500

M: 07787 180400

Email: food@gardenkitchencatering.co.uk

Website: www.gardenkitchencatering.co.uk

Espresso

Roland Schreiber

T: 01603 768881

M: 07876 740579

Email: orders@espresso-online.co.uk

Website: www.espresso-online.co.uk

Bucket List

T: 01263 808880

Email: eat@thebucketlistchips.co.uk

Website: www.chipbuckets.co.uk

Broadside Pizza

M: 07871 338769

Email: enquires@broadsidepizza.co.uk

Website: www.broadsidepizza.co.uk

Lilwalls Hog Roasts

T: 01362 688098

M: 07562 729350

Email: hogroastsnorfolk@gmail.com

Website: www.lilwallshogroast.co.uk

Accommodation

	First Night	Second Night	
First floor in House <i>(sleeps 8)</i>	£990	£594	3 double bedrooms with ensuite bathrooms, 1 twin bedroom with separate bathroom
Apartment in House <i>(sleeps 8-10)</i>	£1,200	£720	A master double bedroom with ensuite, 3 double bedrooms, 2 bathrooms, separate WC, sitting room with sofa bed, kitchen and dining area
East Wing Apartment <i>(sleeps 6)</i>	£600	£360	3 double/twin bedrooms, 2 bathrooms, sitting room and kitchen
Garden Cottage <i>(sleeps 12)</i>	£1,200	£720	6 double bedrooms, 3 bathrooms, separate WC, large sitting room, open-plan kitchen, conservatory with additional dining
Gate House <i>(sleeps 2-4)</i>	£280	£168	1 double bedroom, 1 bathroom, sitting room with sofa bed and kitchen
All Rooms <i>(sleeps 36-40)</i>	£4150	£2562	Includes all the accommodation across the estate

+Accommodation in main house includes self-served breakfast upstairs on the morning of the wedding and a buffet style continental breakfast downstairs the morning after the wedding all other accommodation is self catering

+ Please note that many of the double beds are superking zip & link so can become twin

+ The apartment in the house has a double sofabed in the sitting room which may be used on request with a supplement of £45 per person per night.

+We can accommodate all 40 guests for breakfast for £20 per head

Accommodation

Continued

GLAMPING

As a novel alternative to local hotels why not stay in our six spacious bell tents in the beautiful walled garden close to hot showers and WCs in the old apple house with wash basins and long mirrors and with products provided by Kimberley Hall.

Each tent sleeps 4-6 guests comfortably on faux-fur airbeds and comes with garden chairs, lamps, nightlights and a goody basket with all the necessities.

Minimum charge: £200 per tent/ £50pp per night with own bedding. Bedding is available on request with a supplement.

Events

PARTIES

Depending on usage, charges start from £1,500, set up from 3pm, guest arrival from 6pm and are negotiated upon enquiry.

CORPORATE EVENTS

For customer care/hospitality events, film & photo shoots and product launches, charges are negotiated upon enquiry due to the differing individual usage of the house and grounds.

Please note we have a private airstrip and helicopters can land both sides of the house

Frequently asked questions

How do we book and guarantee our date?

Once you have confirmed your date and filled in the booking form we will require a £2,000 deposit by BACS. This is non-refundable in accordance to our term and conditions. You will then be invoiced 3 months prior to your date. There is a fully-refundable £500 damage deposit to pay at this time.

Do we contact the registrars?

Yes. As soon as you have a date check availability by filling in the form on www.marryinnorfolk.co.uk. All fees are payable directly to the registrar.

What times do we have access?

Depending on the time and nature of your event you may have access the previous day to decorate and set up for your event. You will be required to collect all belongings the following day by 11am.

What time must our event finish?

Last orders are called at 11.30pm with the bar shutting at 11.45pm. Guests must leave by 12.30am. It is essential to book taxis in advance.

Can guests park overnight?

Yes. You are welcome to move your car to our designated area but it must be collected by 11am when the main gates close automatically. Cars are left at the owner's risk.

Can I have a drone?

We will only allow professionals to use drones and only then if they can provide a copy of their license and PLI.

Can we have fireworks?

Fireworks are permitted, however each request has to be run past the owners and our preferred supplier must be used.

Can we bring in our own florist?

Yes of course, though we have terms and conditions for them to follow.

Frequently asked questions continued

What about wine?

All wine must be purchased from the Kimberley Hall wine list a minimum of 6 weeks before your event. This will be invoiced separately and must be paid on placement of the order. If you wish to provide your own wine, corkage will be charged per 750ml bottle at a rate of £9.50 for still wine and £14.50 for all forms of sparkling. We provide a fully-licensed staffed pay bar with card facilities, together with wine and soft drinks. Alcoholic favours incur a corkage charge.

What tables decorations am I allowed to have?

No 3D scatter gems, bubbles, confetti canons or helium balloons are allowed in the venue. Candles are permitted as long as the flame is below the top of the vessel it sits in.

Can I/we bring goodie packs for the children?

We ask that you use coloured pencils only in children's packs, this is to protect our floors but also to protect your pocket. It is worth remembering that if there are stains on the linen you hire in, that Banqueting Hire are unable to remove, you will be charged a replacement fee.

Things to remind your guests.....

Please use the following directions to get your guests to Kimberley Hall.

Guests are advised **NOT** to use the post code **NR18 0RT** in **SAT NAV** as it has been known to take guests to the wrong side of the estate. Instead they should use **'BARNHAM BROOM ROAD, CARLETON FOREHOE'** and follow the road to the pink gate houses.

Please remind your guests to pre-book their taxis prior to them arriving at Kimberley Hall as phone signal is poor and taxis are not readily available in the local vicinity especially on peak days/seasons.

“Having looked at many venues across Norfolk we decided on Kimberley Hall as it presented such a unique and lovely setting with its fabulous location, fantastic grounds and variety of interior spaces.”

