



KIMBERLEY HALL  
NORFOLK

PRIVACY / EXCLUSIVITY / CREATIVITY

# *Welcome to Kimberley*

For over 300 years Kimberley has played host to a multitude of gatherings of all kinds. As the current custodians of this magnificent family home, it is an honour to share these historic spaces and spectacular landscape with you and your guests.

With best wishes

Handwritten signatures of Robbie Buxton and Iona Buxton in black ink, positioned over a faded aerial photograph of a large estate with a lake and trees.

Robbie Buxton

Iona Buxton



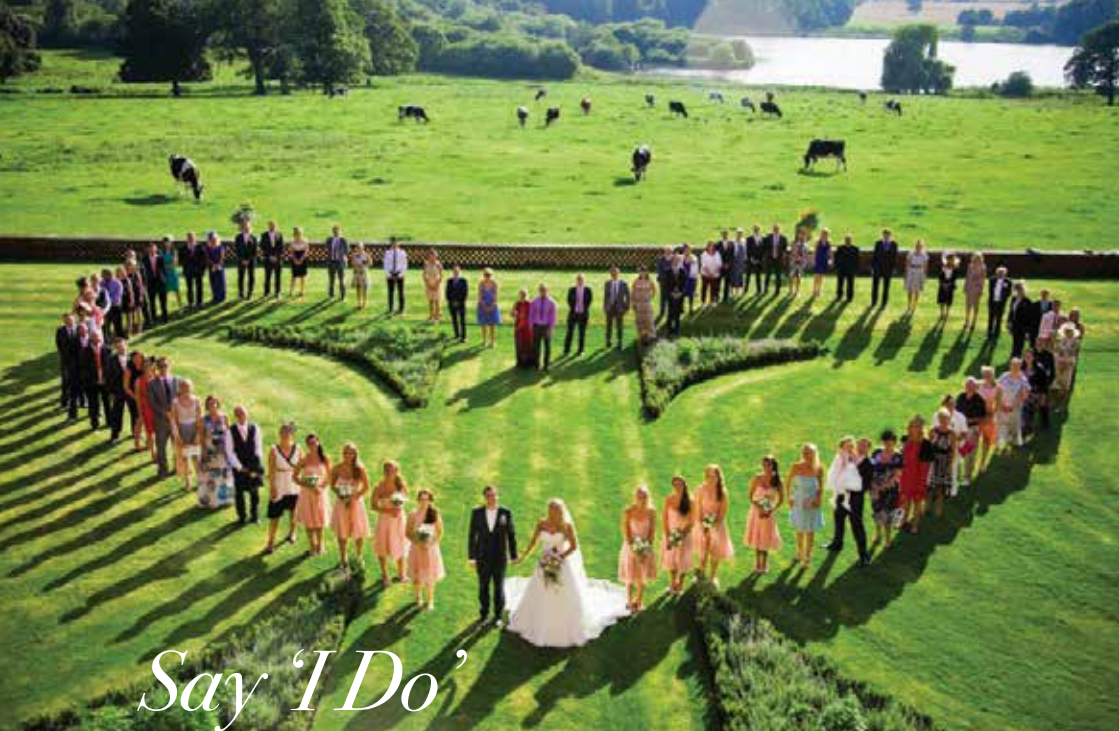
# *About Kimberley*

Built in 1712 during the reign of Queen Anne, Kimberley sits at the centre of a 700-acre park laid out in 1778 by the nation's most famous landscape designer 'Capability' Brown. The house boasts spectacular views past grazing cattle and Norfolk's greatest concentration of ancient oaks, to a large lake at the bottom of the River Tiffey valley.

Centrally located in the county 9 miles west of Norwich and close to arterial road, rail and air links (plus a private airstrip), Kimberley is ideally positioned for all kinds of events should you wish to host a wedding, customer care day, meeting, film or photo shoot, private party, product launch or large-scale open-air event. These are conducted on an exclusive basis with the privacy you would expect of a family home.







# *Say 'I Do'* *At Kimberley*

Kimberley provides a romantic and entirely private setting all year round for your special day with a multitude of beautiful spaces both inside and out that take your guests on a theatrical journey whatever the weather.

The majestic entrance hall and central staircase lead into the Music Room that is licensed for civil ceremonies. This light and elegant space with 18th-century plasterwork offers the grandeur and sincerity befitting the commitments made at a marriage ceremony (seating 120). A fabulous spiral stair leads into the terraced garden for an external duo ceremony; this also serves as a private route to the luxurious four-poster bedrooms

For dining and entertainment the vernacular-chic West Wing with its bespoke marble bar, computer-controlled LED lighting and laser system, giant mirror ball and sumptuous lounge upstairs (with a balcony overlooking the dance floor) provides a stylish and relaxed environment approached via slick library-design WCs. Round tables offer flexible seating for up to 130 for your wedding breakfast or up to 250 for an evening reception. There is also unlimited space in the garden for marquees of any size. Kimberley weddings are looked after by Softley Events who pride themselves in going the extra mile for you.





## *Corporate Hospitality Events, Parties, Photo & Film Shoots*

For over 25 years the team at Kimberley has hosted a multitude of differing events so has a considerable depth of knowledge and experience in organising and assisting you in running whatever occasion you wish to host here. The house and grounds offer a wide diversity of spaces from the classical to the vernacular which can be used as break-out areas to cover any type of large-scale or intimate event. Whilst the house has a maximum capacity, the grounds can host very substantial open-air events and for over two decades home to a boutique music and creative arts festival organised in-house for 3,500 guests.

No two events are the same so we tailor spaces and costs accordingly. We are also able to offer substantial ancillary areas for storage and other purposes and have a 3 x 3-metre projector screen set up in the West Wing for conferences, management training, team-building days, exhibitions and product launches.

Whether you wish to host a private dinner in front of the beautiful log fire or a Christmas party beneath the giant rotating mirror ball, we can cater and style for all kinds of special events throughout the year and at relatively short notice.









## *Accommodation At Kimberley*

Kimberley offers sumptuous rooms for you and your guests, sleeping up to 18 over two floors that interconnect, one above the other. These in turn lead directly down to the event spaces on the ground floor and garden via the beautiful spiral stair that is your own private access.

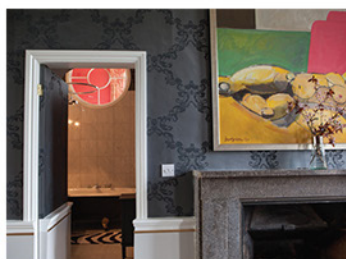
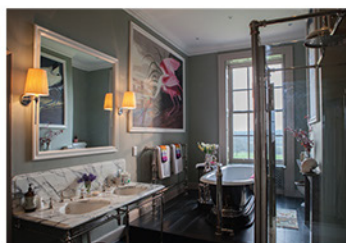
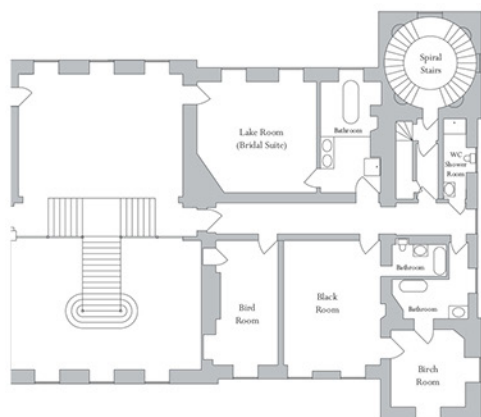
The four rooms on the first floor consist of a lavish four-poster bridal suite with a magnificent Drummonds en suite bathroom that has a unique double shower and raised bath allowing you to overlook the lake; two further double en suite bedrooms (one a four-poster), and a twin room with its own walk-in marble shower room.

We have a luxury apartment on the second floor offering a further four double bedrooms (two of which can be formed into twin rooms), three bathrooms (one en suite) and a separate WC. These are designed to meet the highest aesthetic tastes. The south-facing sitting room with its stunning views of the Capability Brown landscape and lake includes a double sofa-bed. There is a small modern kitchen for your convenience and a spacious dining area in the central hallway that can seat 18 guests comfortably. There is no necessity to hire both floors, however a discount is offered when both floors are taken for two nights or more.



First Floor

Second Floor





## *Food & Drink*

We believe it is important for you to have flexibility so offer a list of carefully selected caterers who will offer beautiful menus and professional staff for your event.

Our stunning marble-topped bar, backlit with colour changing LED lighting, can deliver more or less anything you want. Additionally our bar manager will gladly put together a customised cocktail and drinks plan to suit your tastes. Our extensive wine list has been carefully put together to offer something for all tastes and budgets.





# Schedule of charges

## BESPOKE WEDDINGS (FRIDAY, SATURDAY AND SUNDAY WEDDINGS)

Exclusive use of Kimberley Hall including the historic Music Room for your ceremony, the extensive garden with its views of the lake and the West Wing for your wedding breakfast and party. We can seat up to 130 guests in the West Wing or you may hire a marquee for the grounds. Also included is a specialist event management company, a fully-staffed bar and all your indoor tables and chairs. You are welcome to set up the previous day.

Venue with accommodation for 16 guests over two floors with a sitting room and kitchen. This includes a self-served breakfast upstairs the morning of the wedding and a served continental breakfast downstairs the morning after.

		<b>High season**</b> <i>May - Sept &amp; wknd before Christmas</i>	<b>Mid season**</b> <i>March, April, Oct &amp; Dec*</i>	<b>Low season**</b> <i>Jan, Feb &amp; Nov</i>
Venue hire only		£4,950	£3,950	£3,000
Venue & Accommodation	<i>1 night</i>	£6,690	£5,690	£5,190
	<i>2 nights</i>	£8,000	£7,000	£6,050

\* excluding weekend before Christmas, POA for Christmas and New Year period

\*\* A supplement of £500 per 100 guests will be charged for numbers over 130.

## MID-WEEK PACKAGES (TUES, WEDS & THURS, EXC. ACCOMMODATION)

If you are looking for a great value mid-week wedding, then why not consider the following package for the great occasion:

*Exclusive use of the venue to set up from 9am • wedding organiser, bar and waiting staff • bar facilities • canapés and a two-course wedding breakfast • evening light bites • two glasses of Prosecco for drinks reception, half a bottle of wine with meal and a glass of Prosecco to toast • Standard tableware and kitchen equipment • DJ & disco lighting*

<b>High season</b> <i>May to Sept</i>	<b>Mid season</b> <i>March, April, Oct, Dec</i>	<b>Low season</b> <i>Jan, Feb &amp; Nov</i>
£12,500	£12,000	£11,500

*Available Tuesday – Thursday. Prices are based on a minimum of 80 guests and dependent on menu and wine choices. An additional cost of £150 per person will apply for numbers over 80*

# Accommodation

*Floors can be hired separately*

<b>First floor</b> <i>Luxury accommodation: 3 double bedrooms (2 four poster) and 1 twin; 4 bathrooms</i>	£990
<i>Second night</i>	£890
<b>Second floor</b> <i>Luxury self-contained apartment 4 double/twin bedrooms; 3 bathrooms, sitting room (with double sofa bed) &amp; kitchen</i>	£1,200
<i>Second night</i>	£1,100
<b>Use of bedroom for changing 9am–7pm</b>	£190

*The sitting room has a double sofa bed which may be used on request with a supplement of £45 per person per night for linen and breakfast. If you require fresh towels or a linen change during your two-night stay this will be £30 per bed.*

## GLAMPING

As a novel alternative to local hotels why not stay in our six spacious bell tents in the walled garden close to hot showers, proper WCs, washbasins and long mirrors (with products provided by KH). Each tent sleeps 4 - 6 guests comfortably on airbeds and comes with garden chairs, lamps, nightlights and a goody basket. Minimum charge: £200 per tent/ £50pp per night with own bedding. Bedding is available on request with a supplement.

## PARTIES

Depending on usage, charges start from £1,500, set up from 3pm, guest arrival from 6pm and are negotiated upon enquiry.

## CORPORATE EVENTS

For customer care/hospitality events, film & photo shoots and product launches, charges are negotiated upon enquiry due to the differing individual usage of the house and grounds.



## **FOOD**

Please choose from our nominated caterers who have been carefully vetted to provide you and your guests with the best experience. Their prices start from £80 per head which includes hire of table linen, glassware, crockery and cutlery and Kitchen equipment. If you choose your own caterer this will incur a £750 supplement and they will need to be approved by us before using the facilities.

# *Nominated Caterers*

### **Expresso**

Roland Schreiber

T: 01603 768881

M: 07876 740579

[orders@expresso-online.co.uk](mailto:orders@expresso-online.co.uk)

[www.expresso-online.co.uk](http://www.expresso-online.co.uk)

### **Garden Kitchen Catering**

Alex Firman

T: 01603 784500

M: 07787 180400

[food@gardenkitchencatering.co.uk](mailto:food@gardenkitchencatering.co.uk)

[www.gardenkitchencatering.co.uk](http://www.gardenkitchencatering.co.uk)

### **Mackenzie-David Events**

Rebecca Mackenzie

M: 07460 400276

T: 01986 893991

[rebecca@mackenzie-david.co.uk](mailto:rebecca@mackenzie-david.co.uk)

### **Carway-Roe Events**

Conor Carway-Roe

T: 07783 480082

[info@carwayroeevents.co.uk](mailto:info@carwayroeevents.co.uk)

[www.carwayroeevents.co.uk](http://www.carwayroeevents.co.uk)

### **Owsley-Brown Catering Company**

Caroline Owsley-Brown

Conkers, Common Road,

West Bilney, PE32 1JX

T: 01553 840190

[info@owsley-brown.com](mailto:info@owsley-brown.com)

[www.owsley-brown.com](http://www.owsley-brown.com)

# *Frequently asked questions*

## **HOW DO I BOOK AND GUARANTEE MY DATE?**

Once you have confirmed your date and filled in the booking form we will require a £2,000 deposit by BACS. This is non-refundable in accordance to our term and conditions. You will then be invoiced 3 months prior to your date. There is a fully-refundable £500 damage deposit to pay at this time.

## **DO WE CONTACT THE REGISTRARS?**

Yes. As soon as you have a date check availability by filling in the form on [www.marryinnorfolk.co.uk](http://www.marryinnorfolk.co.uk). All fees are payable directly to the registrar.

## **WHAT TIMES DO WE HAVE ACCESS?**

Depending on the time and nature of your event you may have access the previous day to decorate and set up for your event. You will be required to collect all belongings the following day by 11am.

## **WHAT TIME MUST OUR EVENT FINISH?**

Last orders are called at 11.30pm with the bar shutting at 11.45pm. Guests must leave by 12.30am. It is essential to book taxis in advance.

## **CAN GUESTS PARK OVERNIGHT?**

Yes. You are welcome to move your car to our designated area but it must be collected by 11am when the main gates close automatically. Cars are left at the owner's risk.

## **WHAT ABOUT WINE?**

All wine must be purchased from the Kimberley Hall wine list a minimum of 6 weeks before your event. This will be invoiced separately and must be paid on placement of the order. If you wish to provide your own wine, corkage will be charged per 750ml bottle at a rate of £9.50 for still wine and £14.50 for all forms of sparkling. We provide a fully-licensed staffed pay bar with card facilities, together with wine and soft drinks.

## **CAN WE BRING IN OUR OWN FLORIST?**

Yes of course, although we are happy to recommend should you need.

## **IS THE ACCOMMODATION AVAILABLE ON A SELF-CATERING BASIS?**

Yes. Self-catering is fine if preferred.

*“Having looked at many venues across Norfolk we decided on Kimberley Hall as it presented such a unique and lovely setting with its fabulous location, fantastic grounds and variety of interior spaces.”*



## Kimberley Hall

Wymondham

Norfolk


NR18 0RT

**Please contact us if you would like to arrange a visit**

[events@kimberleyhall.co.uk](mailto:events@kimberleyhall.co.uk)

[weddings@kimberleyhall.co.uk](mailto:weddings@kimberleyhall.co.uk)

T: 01603 759 447

 @Kimberleyvenue

 @kimberleyhallnorfolk

[www.kimberleyhall.co.uk](http://www.kimberleyhall.co.uk)

 /kimberleyhallnorfolk

